

eDART™

**SOFTWARE
USER GUIDE**

DATA EXTRACTOR v3.1



**TRAINING AND TECHNOLOGY FOR
INJECTION MOLDING**

Print Date 11.15.2018

Rev 0

RJG

SOFTWARE USER GUIDE

DATA EXTRACTOR v3.1



INTRODUCTION

DISCLAIMER	II
PRIVACY	II
ALERTS	II

REQUIREMENTS

OPERATING SYSTEM	I
FRAMEWORK	I

GETTING STARTED

OVERVIEW	2
LAUNCHING THE DATA EXTRACTOR	3

eDART LIST

REFRESH	4
ADD	4
VIEW eDART	4
LAUNCH eDART DATA EXTRACTOR	4

EDART DATA EXTRACTOR

GET DATA	6
LANGUAGE	6
PICK SAVE FOLDER	6
PICK A MOLD	6
TIME RANGE SELECTION	6
GET CONFIGURATIONS	7
PICK A MOLD	7
PICK SAVE FOLDER	7
PUT CONFIGURATIONS	8
PICK A MOLD	8
PICK CONFIGURATION FOLDER	8
GET LOGS	9
SELECT LOG FILES	9
PICK SAVE FOLDER	9
GET SECURITY	10
SELECT SECURITY FILES	10
PICK SECURITY FOLDER	10
PUT SECURITY	11
SELECT SECURITY FILES	11
PICK SECURITY FOLDER	11
GET MACHINES	12
PICK A MACHINE	12
PICK SAVE FOLDER	12
PUT MACHINES	13
SELECT A MACHINE	13
PICK MACHINES FOLDER	13
TROUBLESHOOTING	14

INTRODUCTION

Read, understand, and comply with all following instructions. This guide must be kept available for reference at all times.

DISCLAIMER

Inasmuch as RJG, Inc. has no control over the use to which others may put this material, it does not guarantee that the same results as those described herein will be obtained. Nor does RJG, Inc. guarantee the effectiveness or safety of any possible or suggested design for articles of manufacture as illustrated herein by any photographs, technical drawings, and the like. Each user of the material or design or both should make his own tests to determine the suitability of the material or any material for the design as well as the suitability of the material, process, and/or design for his own particular use. Statements concerning possible or suggested uses of the material or designs described herein are not to be construed as constituting a license under any RJG, Inc. patent covering such use or as recommendations for use of such material or designs in the infringement of any patent.

PRIVACY

Designed and developed by RJG, Inc. Manual design, format and structure copyright 2018 RJG, Inc. content documentation copyright 2018 RJG, Inc. All rights reserved. Material contained herein may not be copied by hand, mechanical, or electronic means, either whole or in part, without the express written consent of RJG, Inc. Permission will normally be granted for use in conjunction with inter-company use not in conflict with RJG's best interests.

ALERTS

The following three alert types are used as needed to further clarify or highlight information presented in the manual:



Term

A definition of a term or terms used in the text.



NOTE *A note provides additional information about a discussion topic.*



CAUTION *A caution is used to make the operator aware of conditions that can cause damage to equipment and/or injury to personnel.*

REQUIREMENTS

OPERATING SYSTEM

Windows® PC running the following (subsequent versions may also be acceptable):

- Windows 7
- Windows 7 Service Pack 1
- Windows Server 2003 Service Pack 2¹
- Windows Server 2008¹
- Windows Server 2008 R2¹
- Windows Server 2009 R2 SP1¹
- Windows Vista Service Pack 1
- Windows XP Service Pack 3

¹Server systems configured as Server Core Role are not supported.

FRAMEWORK

- Microsoft .NET Framework 4

GETTING STARTED

OVERVIEW

The eDART® Data Extractor enables the upload and download of eDART data and configuration files to and from a PC. The data acquired through the Data Extractor can be viewed and used in Analyzer. The eDART Data Extractor and Analyzer are part of the RJG Insight System software suite.

The eDART Data Extractor program consists of two main windows: the eDART List, and the eDART Data Extractor. The eDART List window displays all networked eDART systems and allows the user to select an eDART system to open in the eDART Data Extractor window; the eDART Data Extractor window allows users to get and put data, configurations, logs, security, and machine files between the PC and the selected eDART system.

eDART List

Machine	IP Address	Node	Group	Version
V9/V9/V9	194.183.40.23	23	LOCATION	9.3.1
Unknown	12.26.44.249	249	NEW_EDART	10.5.2
Machine/Cell/Plant	12.26.44.12	12	1_2_3	9.3.1
Blah	12.26.44.4	4	NEW_EDART	10.5.2
71212	12.22.40.14	4	NEW_EDART	10.5.3
Lab/South/FANUC	174.31.33.212	212	RJG_LAB	9.3
test/test/test	12.26.44.46	46	NEW_EDART	10.5.2
V9/V9/V9	194.183.40.24	24	LOCATION	9.3.1
asdfasdf/asdfasdf/...	12.22.40.18	4	SUPPORT	9.3.1
Lab/South/Toyo	174.31.33.216	216	RJG_LAB	9.3
RJG/TEST/9588	12.26.44.13	13	NEW_EDART	10.5.4
test/test/test	12.26.44.8	8	NEW_EDART	9.3.1.1
Unknown	12.26.44.32	32	NEW_EDART	9.3.1
test/test/test	12.26.44.45	45	NEW_EDART	X.Y
Unknown	12.26.44.248	248	NEW_EDART	
Lab/south/south/ar	174.31.33.215	215	RJG_LAB	9.3

Count: 43

Data Extractor

eDART Data Extractor - 12.26.44.13

Get Data | Get Configurations | Put Configurations | Get Logs | Get Security | Put Security | Get Machines | Put Machines

Pick a Mold: 12.26.44.13
└─ test
└─ yyt

Pick Save Folder: c:\edart data

Time Range Selection:
Begin Date Selection: September, 2013
End Date Selection: September, 2013

From: 09/16/2013 - 12:56 PM
To: 09/17/2013 - 12:56 PM

Language: us_english

No files to download

LAUNCHING THE DATA EXTRACTOR

1. Open Data Extractor

Open the Data Extractor from either the RJG Insight System icon on the desktop, or from the Start menu.

2. Run Route Utility

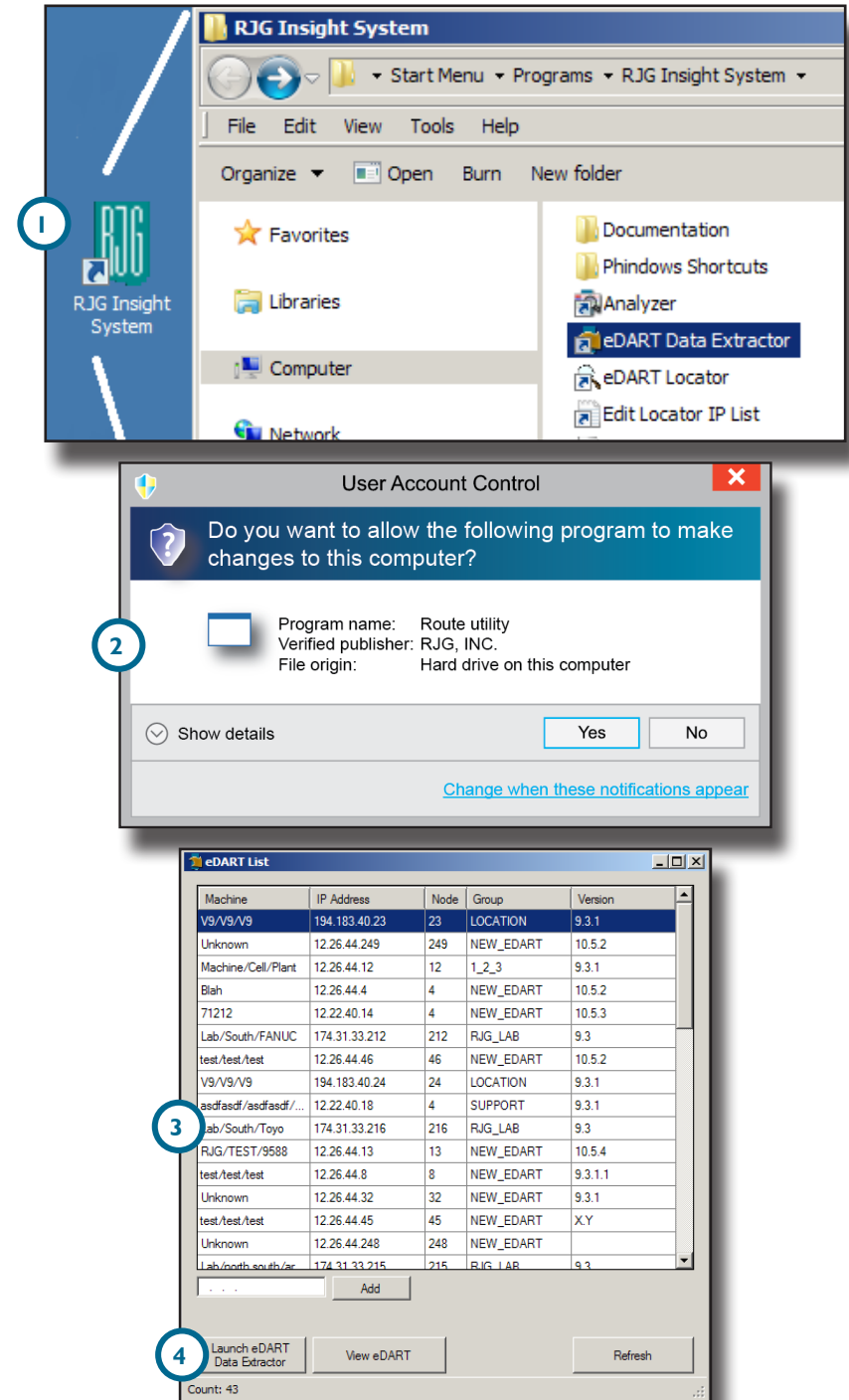
If a User Account Control is enabled, the system will prompt for permission to allow the “route utility” program to run; select yes to allow the program to execute. The route utility program creates network routes to each eDART connected to the network, and is necessary for the utilization of the Data Extractor software.

3. Select an eDART from the eDART List

After Data Extractor program launch, a network broadcast message is initiated to detect all eDART systems. The eDART List window will appear, displaying a list of the eDART systems found on the network.

4. Launch the eDART Data Extractor

Once an eDART system is selected, select the Launch eDART Data Extractor button to open the eDART Data Extractor window.



eDART LIST

REFRESH

Upon startup, the program may require up to 10–15 seconds to receive a response from networked eDART systems; if a networked eDART system fails to respond and is missing from the list, select the refresh button (1 at right) to initiate another network broadcast message and locate available eDART systems. The status bar located at the bottom of the window will display the total number of eDART systems detected.

ADD

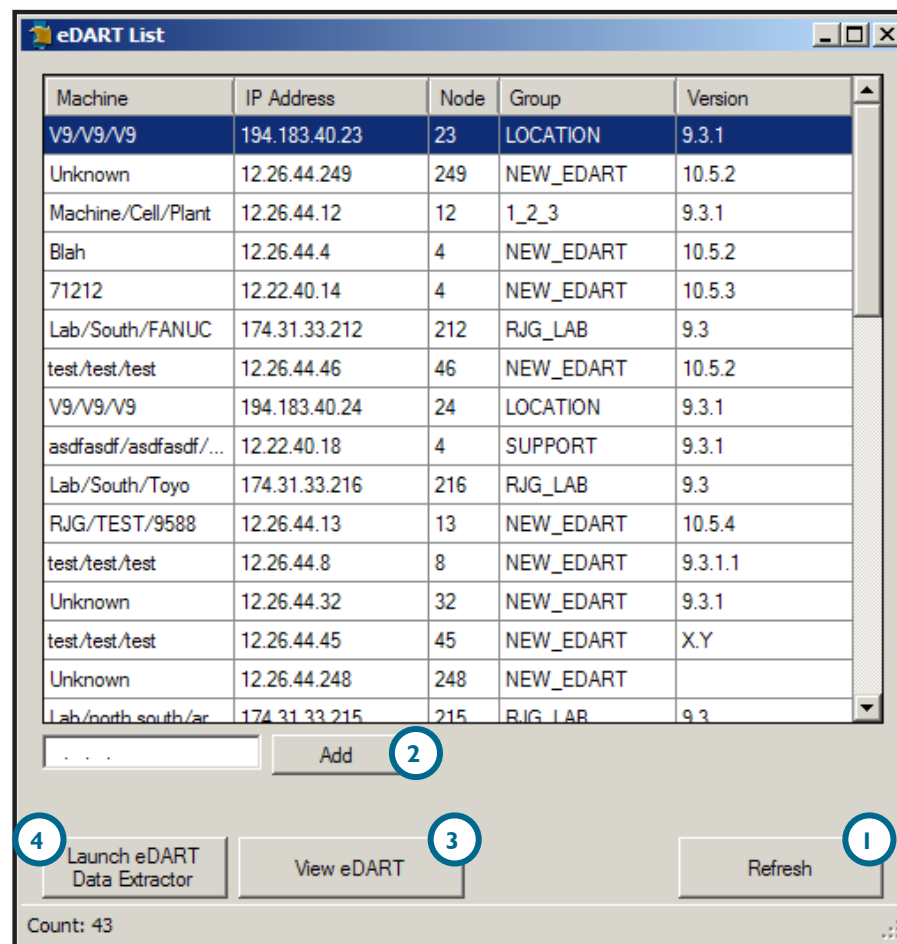
If a networked eDART system does not appear on the eDART list—even after a refresh—it is possible to manually add the system to the eDART List. Enter the eDART system's IP address in the provided field, then select the Add button (2 at right). If the eDART system is networked correctly and the IP address is valid, it will be added to the list.

VIEW eDART

To view an eDART system and current process using the Phindows utility (if installed), select the desired system from the eDART List, then select the View eDART button (3 at right).

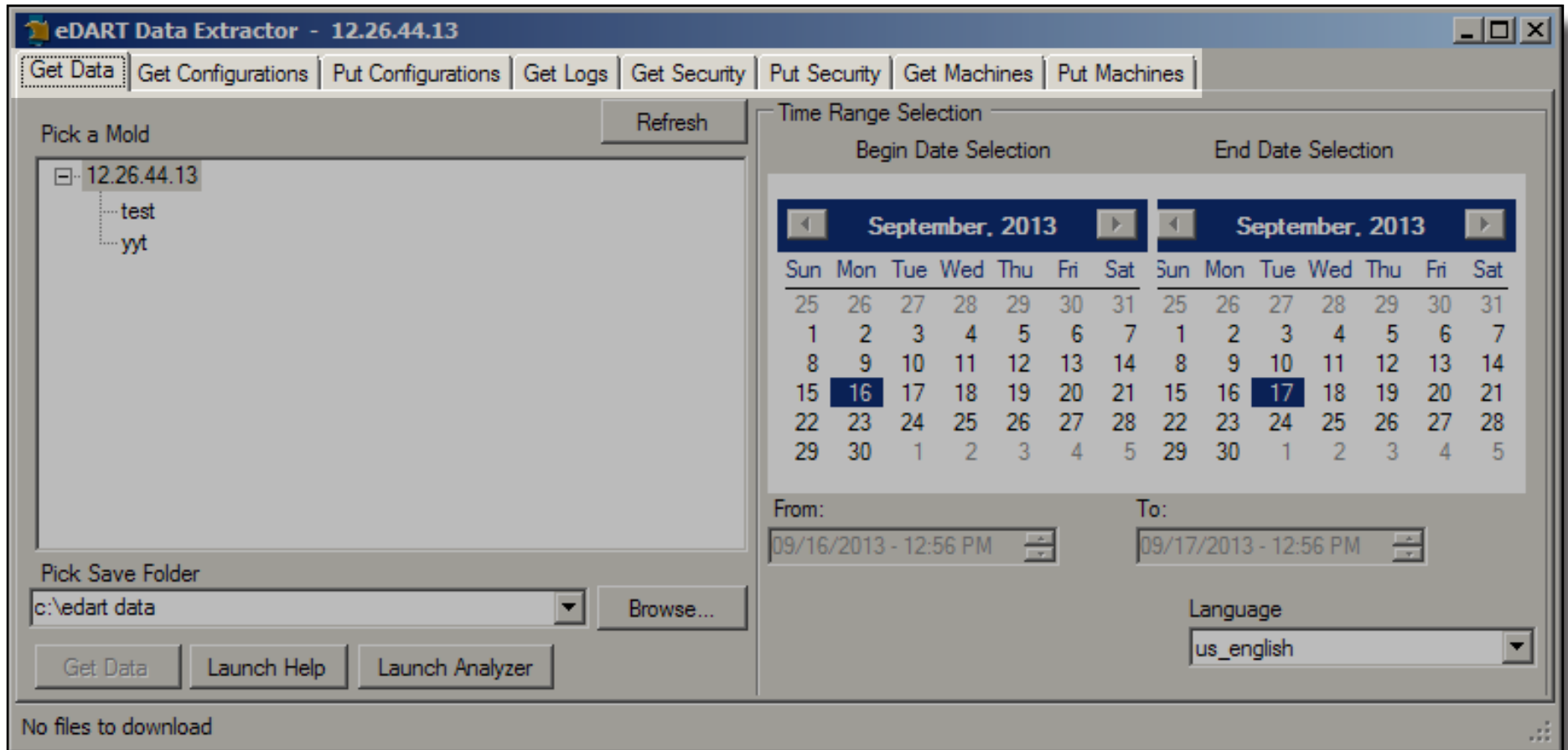
LAUNCH eDART DATA EXTRACTOR

To view and eDART system with the Data Extractor, select the desired system from the eDART List, then select the Launch eDART Data Extractor button (4 at right). If the program cannot connect to the eDART system, an error message will be displayed; if the eDART system connection is available, the eDART Data Extractor window will appear.



EDART DATA EXTRACTOR

The eDART Data Extractor window has eight tabs from which a user can transfer eDART data, configurations, logs, security, and machines—to and from the eDART. Data is available by mold name using a time range selection.



GET DATA

To get data, a mold, date range, and save folder must be defined. To start data transfer, select the Get Data button (1 below). The program will begin the data transfer; the status is displayed at the bottom of the screen; this action copies the data, leaving the original data intact on the eDART. To cancel the transfer, select the Abort button.

LANGUAGE

Select the drop-down menu (2 below) to change the software language; US English (American English), Chinese (simplified), French, Italian, Spanish, and German are all available.

PICK SAVE FOLDER

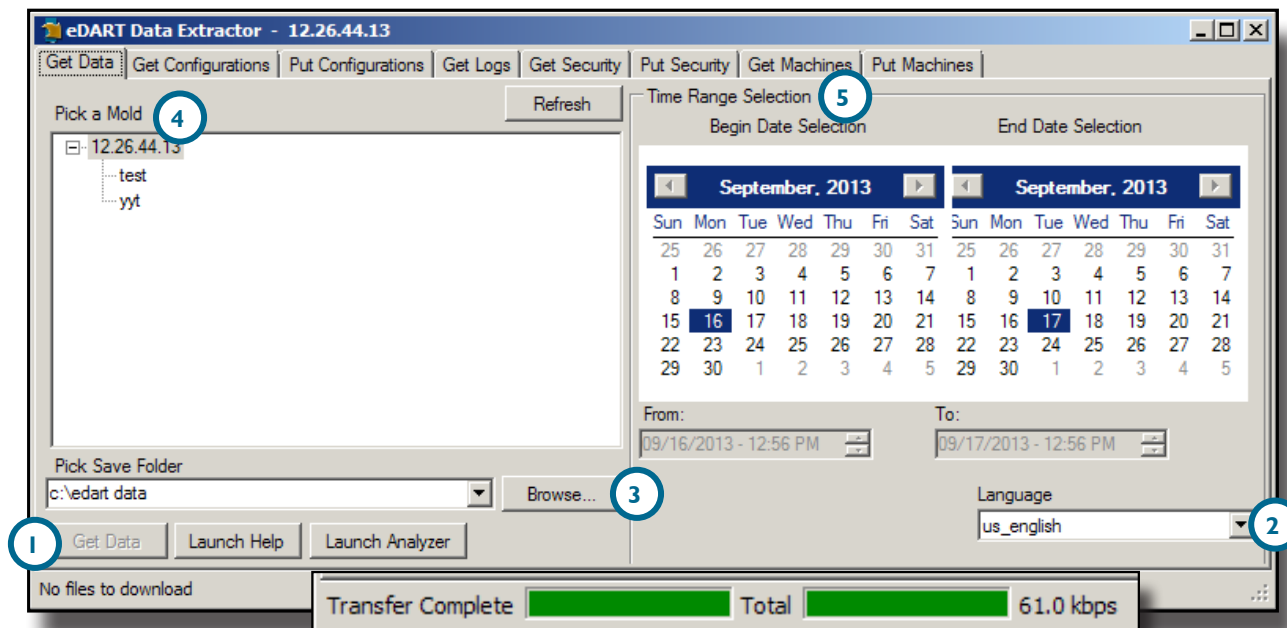
Select the Browse button (3 below) to navigate to the location which will be used to save any data exported from the eDART. RJG strongly recommends the use of the default folder to minimize the risk of misplacing data. The status bar located at the bottom of the window will display the total number of files selected for download, and the data size.

PICK A MOLD

The Pick a Mold (4 below) portion of the window displays the available mold names which have data that can be exported. Select a mold from which to get data. If a mold is missing from the list, select the refresh button to initiate another network broadcast message and locate available molds. The status bar located at the bottom of the window will display the total number of files detected available for download.

TIME RANGE SELECTION

The Time Range Selection (5 below) portion of the window provides two calendar views; one view for Begin Date Selection and the other for End Date Selection. A time range must be defined in order to get data.



GET CONFIGURATIONS

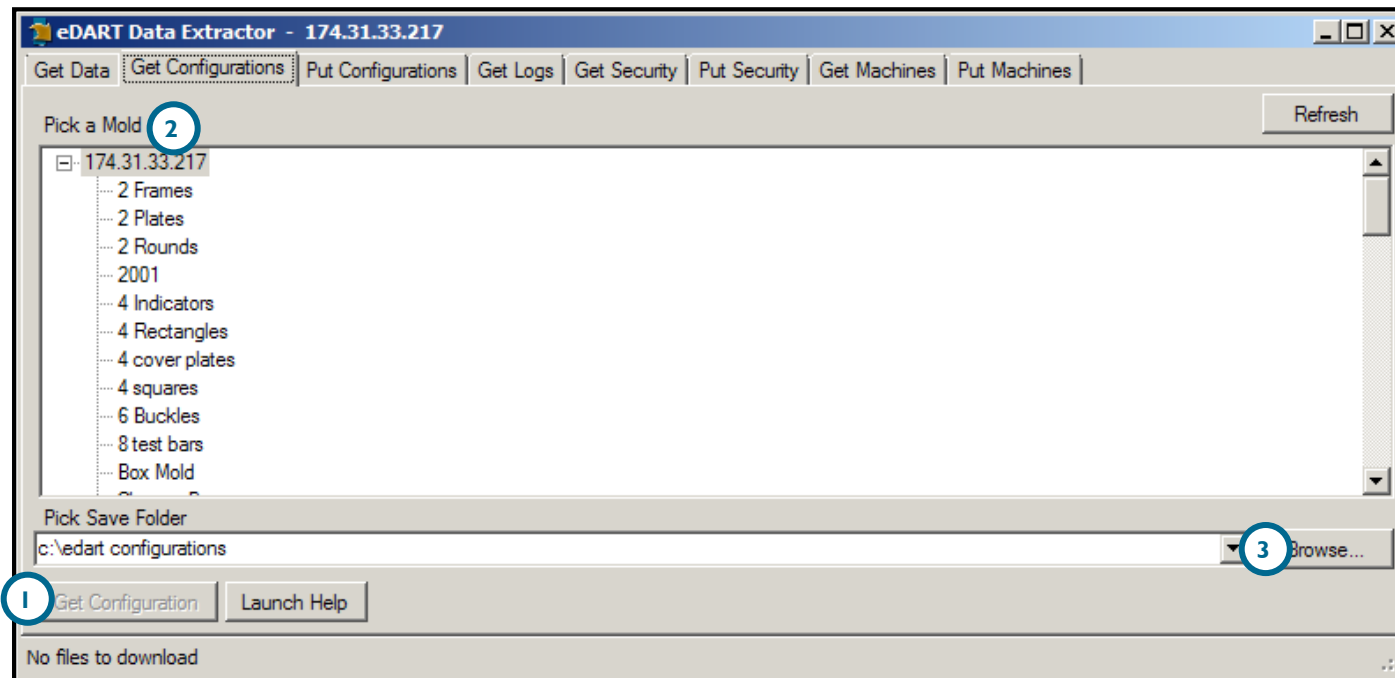
To get configurations, a mold and save folder must be defined. To start data transfer, select the Get Configuration button (1 below). The program will begin the data transfer; the status is displayed at the bottom of the screen. To cancel the transfer, select the Abort button.

PICK A MOLD

The Pick a Mold (2 below) portion of the window displays the available mold names on the connected eDART which have configurations that can be exported. Select a mold from which to get configurations. If a mold is missing from the list, select the refresh button to initiate another network broadcast message and locate available molds. The status bar located at the bottom of the window will display the total number of files detected available for download.

PICK SAVE FOLDER

Select the Browse button (3 below) to navigate to the location which will be used to save any configurations exported from the eDART. RJG strongly recommends the use of the default folder to minimize the risk of misplacing files. The status bar located at the bottom of the window will display the total number of files selected for download, and the data size.



PUT CONFIGURATIONS

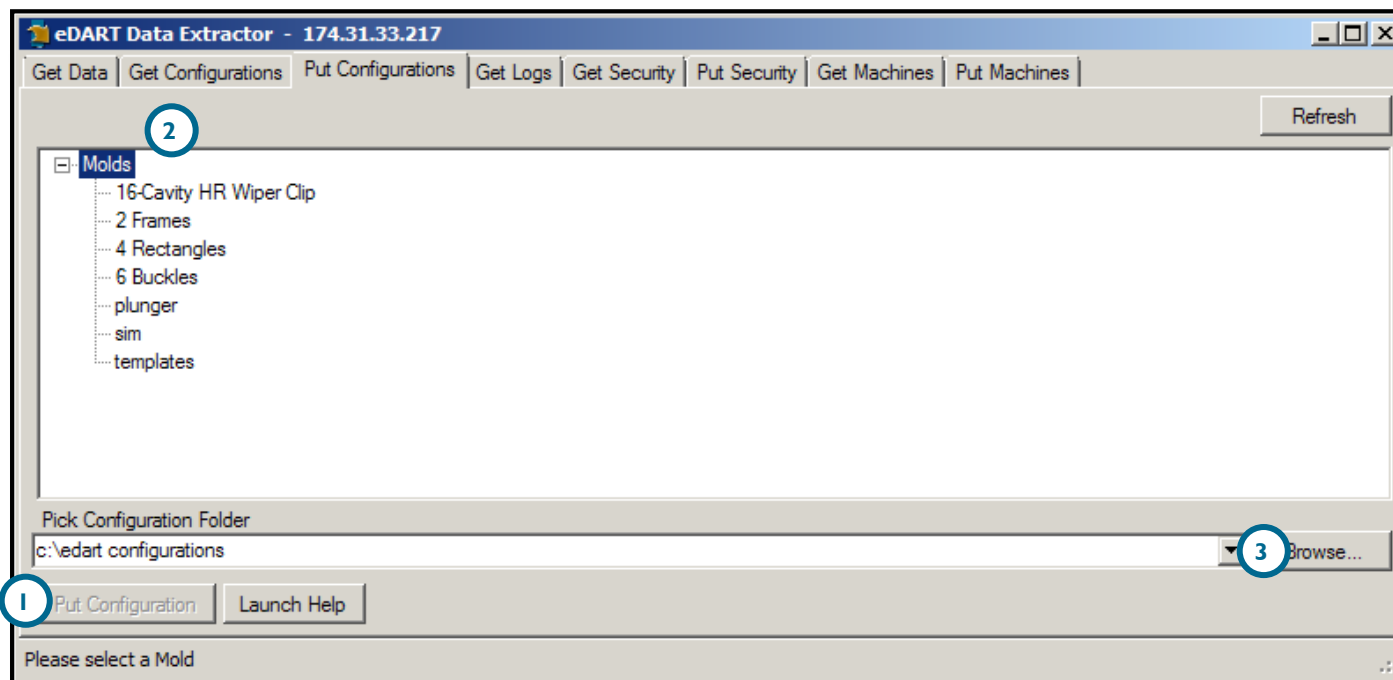
To put configurations, a mold and save folder must be defined. To start data transfer, select the Put Configuration button (1 below). The program will begin the data transfer; the status is displayed at the bottom of the screen. To cancel the transfer, select the Abort button.

PICK A MOLD

The Pick a Mold (2 below) portion of the window displays the available mold names on the PC from which configurations can be transferred. Select a mold from which to transfer configurations. If a mold is missing from the list, select the refresh button to initiate another network broadcast message and locate available molds.

PICK CONFIGURATION FOLDER

Select the Browse button (3 below) to navigate to the location which will be used to transfer any configurations to the eDART. The status bar located at the bottom of the window will display the total number of files selected for upload, and the data size.



GET LOGS

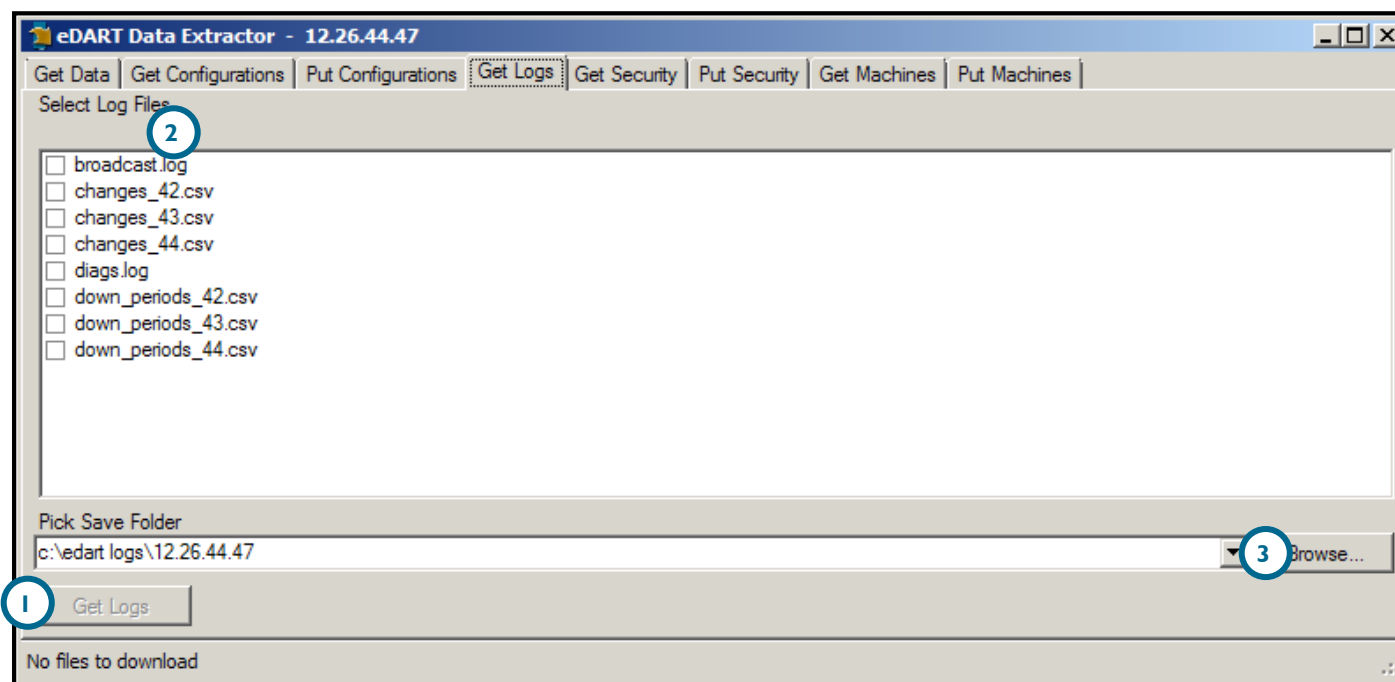
To get logs, a log file and save folder must be defined. To start data transfer, select the Get Logs (1 below) button. The program will begin the data transfer; the status is displayed at the bottom of the screen. To cancel the transfer, select the Abort button.

SELECT LOG FILES

The Select Log Files (2 below) portion of the window displays the available logs on the connected eDART that can be exported. Select a file from which to get logs. The status bar located at the bottom of the window will display the total number of files detected available for download.

PICK SAVE FOLDER

Select the Browse button (3 below) to navigate to the location which will be used to save any logs exported from the eDART. RJG strongly recommends the use of the default folder to minimize the risk of misplacing files. The status bar located at the bottom of the window will display the total number of files selected for download, and the data size.



GET SECURITY

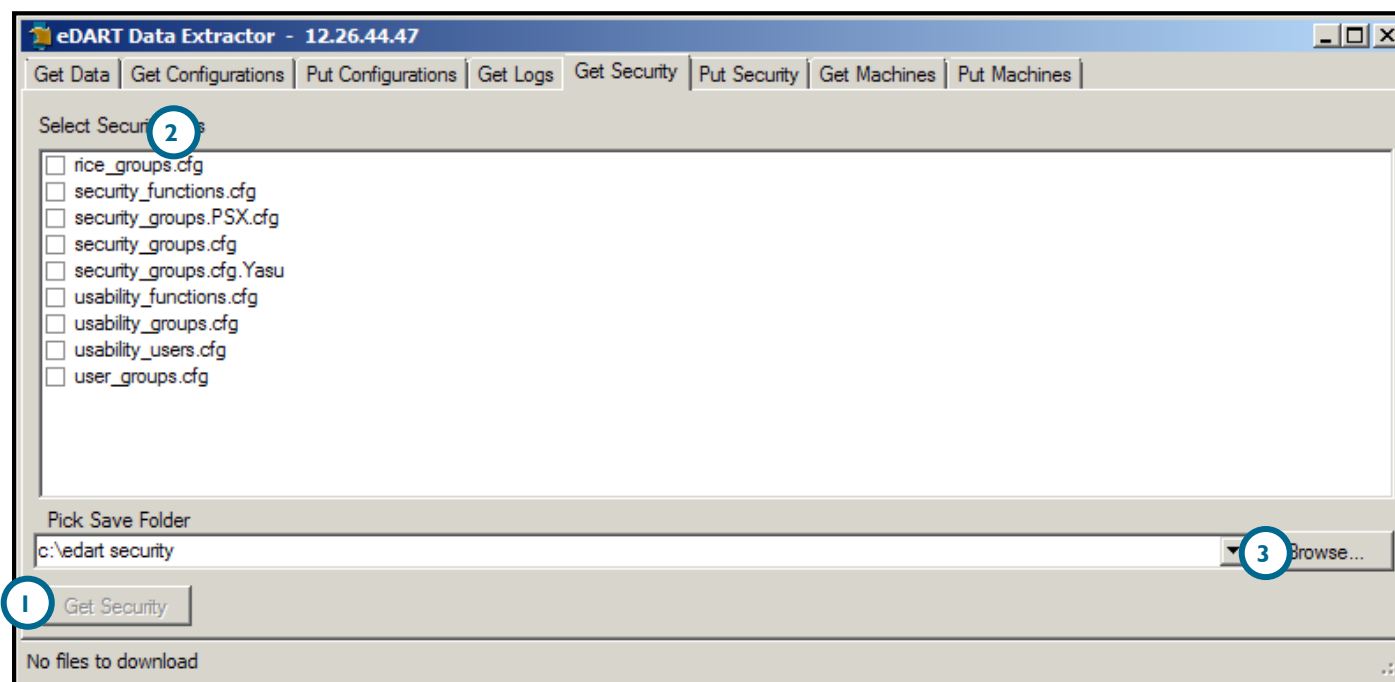
To get security files, a security file and save folder must be defined. To start data transfer, select the Get Security button (1 below). The program will begin the data transfer; the status is displayed at the bottom of the screen. To cancel the transfer, select the Abort button.

SELECT SECURITY FILES

The Pick Security Files (2 below) portion of the window displays the available security files on the connected eDART that can be exported. Select a security file to transfer. If a security file is missing from the list, select the refresh button to initiate another network broadcast message and locate available files. The status bar located at the bottom of the window will display the total number of files detected available for download.

PICK SAVE FOLDER

Select the Browse button (3 below) to navigate to the location which will be used to save any security files exported from the eDART. RJG strongly recommends the use of the default folder to minimize the risk of misplacing files. The status bar located at the bottom of the window will display the total number of files selected for download, and the data size.



PUT SECURITY

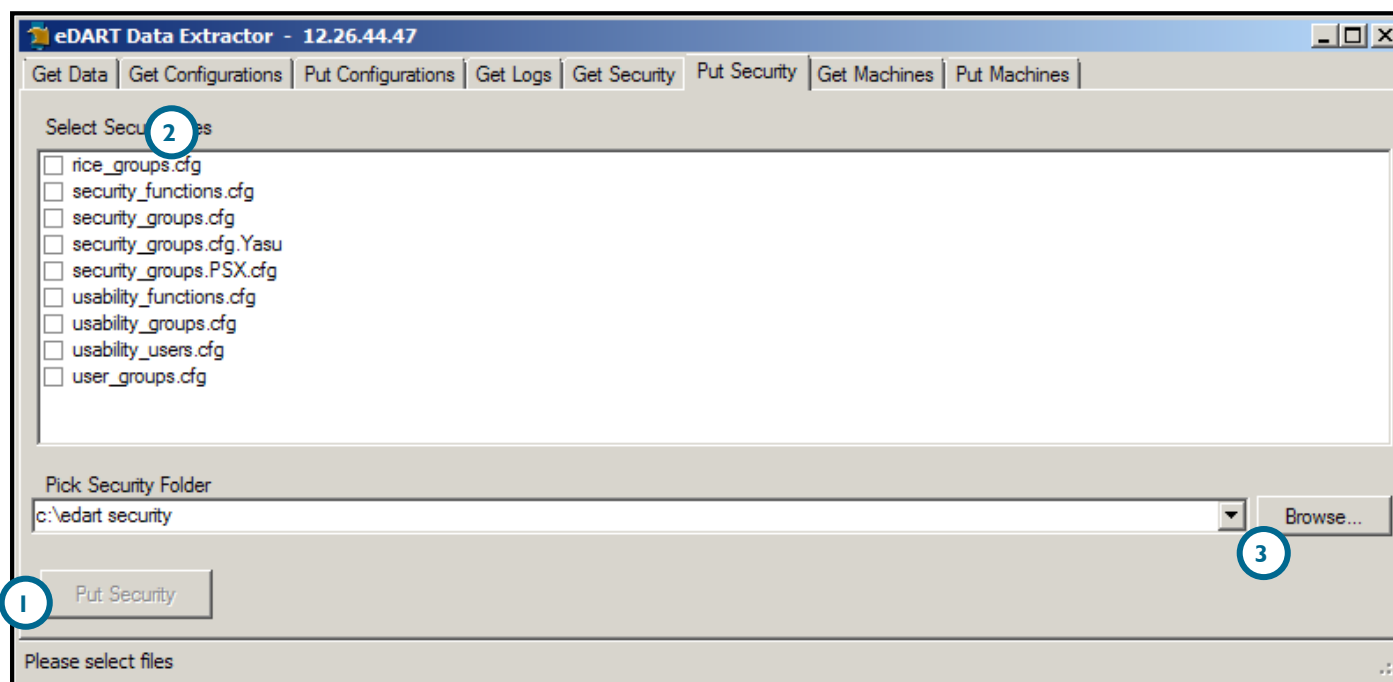
To put security, a security file and security folder must be defined. To start data transfer, select the Put Security button (1 below). The program will begin the data transfer; the status is displayed at the bottom of the screen. To cancel the transfer, select the Abort button.

SELECT SECURITY FILES

The Select Security Files (2 below) portion of the window displays the available security files on the PC that can be transferred. Select a security file to transfer. If a file is missing from the list, select the refresh button to initiate another network broadcast message and locate available files.

PICK SECURITY FOLDER

Select the Browse button (3 below) to navigate to the location which will be used to transfer any configurations to the eDART. The status bar located at the bottom of the window will display the total number of files selected for upload, and the data size.



GET MACHINES

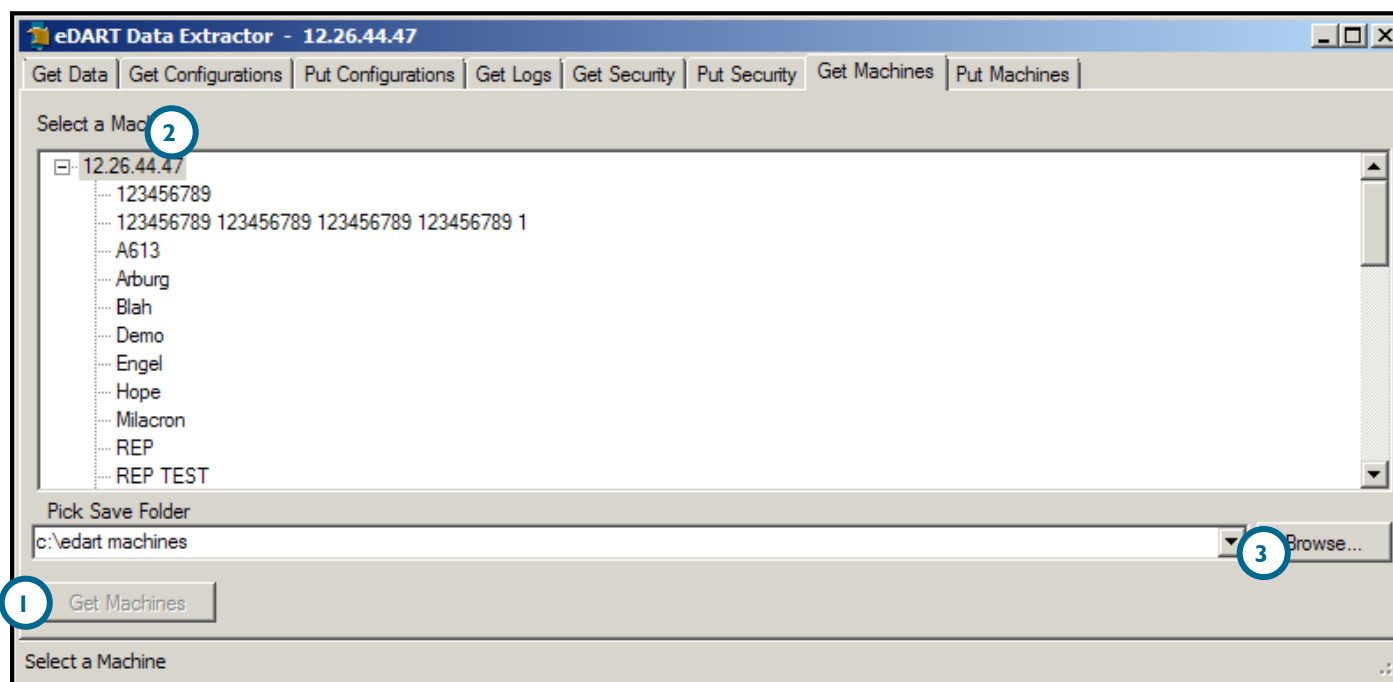
To get machine files, a machine and save folder must be defined. To start data transfer, select the Get Machines button (1 below). The program will begin the data transfer; the status is displayed at the bottom of the screen. To cancel the transfer, select the Abort button.

PICK A MACHINE

The Pick a Machine (2 below) portion of the window displays the available machine names which have machine files on the connected eDART that can be exported. Select a machine from which to get files. If a machine is missing from the list, select the refresh button to initiate another network broadcast message and locate available machines. The status bar located at the bottom of the window will display the total number of files detected available for download.

PICK SAVE FOLDER

Select the Browse button (3 below) to navigate to the location which will be used to save any machine files exported from the eDART. RJG strongly recommends the use of the default folder to minimize the risk of misplacing files. The status bar located at the bottom of the window will display the total number of files selected for download, and the data size.



PUT MACHINES

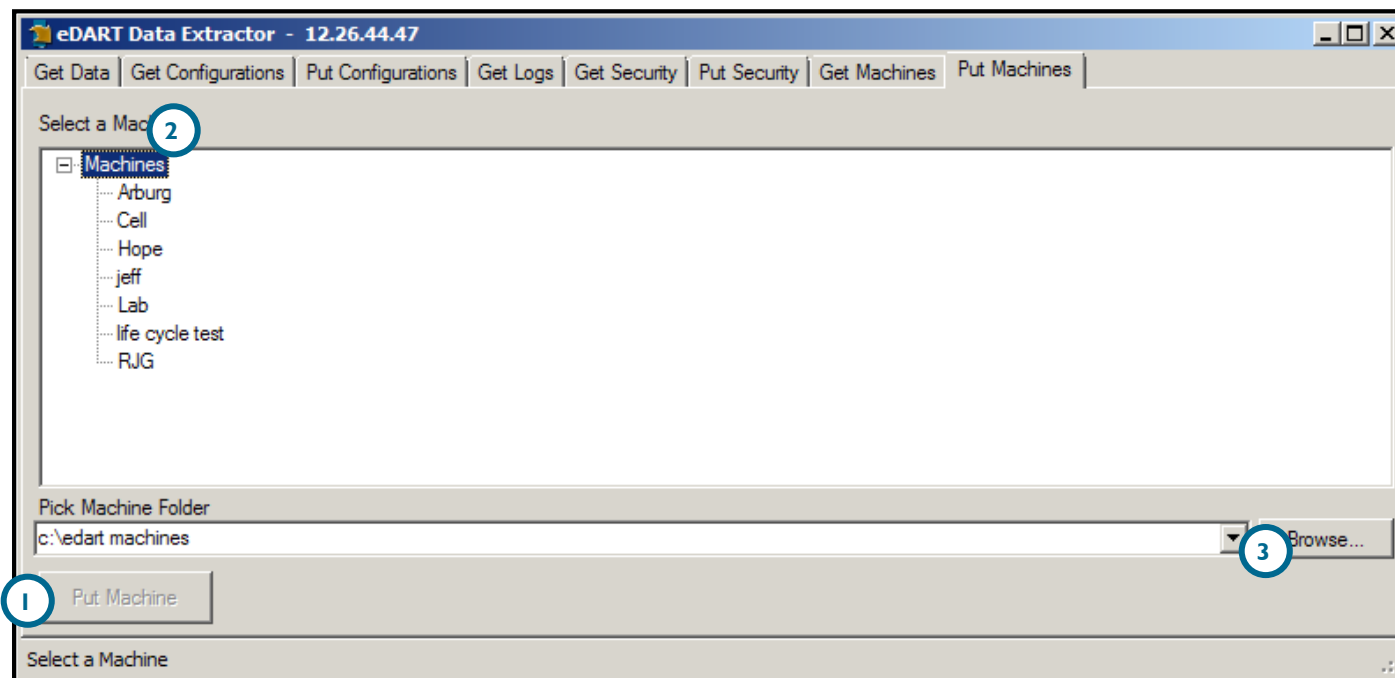
To put machines, a machine file and folder must be defined. To start data transfer, select the Put Machine button (1 below). The program will begin the data transfer; the status is displayed at the bottom of the screen. To cancel the transfer, select the Abort button.

SELECT A MACHINE

The Select a Machine (2 below) portion of the window displays the available machine files on the PC that can be transferred. Select a security file to transfer. If a file is missing from the list, select the refresh button to initiate another network broadcast message and locate available files.

PICK MACHINES FOLDER

Select the Browse button (3 below) to navigate to the location which will be used to transfer any machine files to the eDART. The status bar located at the bottom of the window will display the total number of files selected for upload, and the data size.



TROUBLESHOOTING

PROBLEM	SOLUTION
<p>When transferring files, the eDART Data Extractor asks to confirm overwrite of files when the files being transferred are newer.</p>	<p>Confirm the time setting on the eDART is correct.</p>
<p>The eDART List does not display any of the networked eDART systems.</p>	<p>Ensure that the eDART network is accessible via test ping to an individual eDART IP address.</p> <p>Ensure the UDP traffic on port 55330 is not blocked on the network.</p>
<p>Manual connection to eDART system from Data Extractor fails</p>	<p>The manually-added eDART system must be reachable through the default route of the PC. If the PC network settings are manually-configured, ensure the net mask on the PC matches the net mask configured in the eDART system.</p>

LOCATIONS/OFFICES

USA

RJG USA (HEADQUARTERS)

3111 Park Drive
Traverse City, MI 49686
P +01 231 947-3111
F +01 231 947-6403
sales@rjginc.com
www.rjginc.com

ITALY

NEXT INNOVATION SRL

Milano, Italy
P +39 335 178 4035
sales@it.rjginc.com
it.rjginc.com

MEXICO

RJG MEXICO

Chihuahua, Mexico
P +52 614 4242281
sales@es.rjginc.com
es.rjginc.com

SINGAPORE

RJG (S.E.A.) PTE LTD

Singapore, Republic of Singapore
P +65 6846 1518
sales@sg.rjginc.com
en.rjginc.com

FRANCE

RJG FRANCE

Arnithod, France
P +33 384 442 992
sales@fr.rjginc.com
fr.rjginc.com

CHINA

RJG CHINA

Chengdu, China
P +86 28 6201 6816
sales@cn.rjginc.com
zh.rjginc.com

GERMANY

RJG GERMANY

Karlstein, Germany
P +49 (0) 6188 44606 11
sales@de.rjginc.com
de.rjginc.com

KOREA

CAEPRO

Seoul, Korea
P +82 02-2113-1870
sales@ko.rjginc.com
www.caepro.co.kr

IRELAND/UK

RJG TECHNOLOGIES, LTD.

Peterborough, England
P +44(0)1733-232211
sales@ie.rjginc.com
www.rjginc.co.uk

