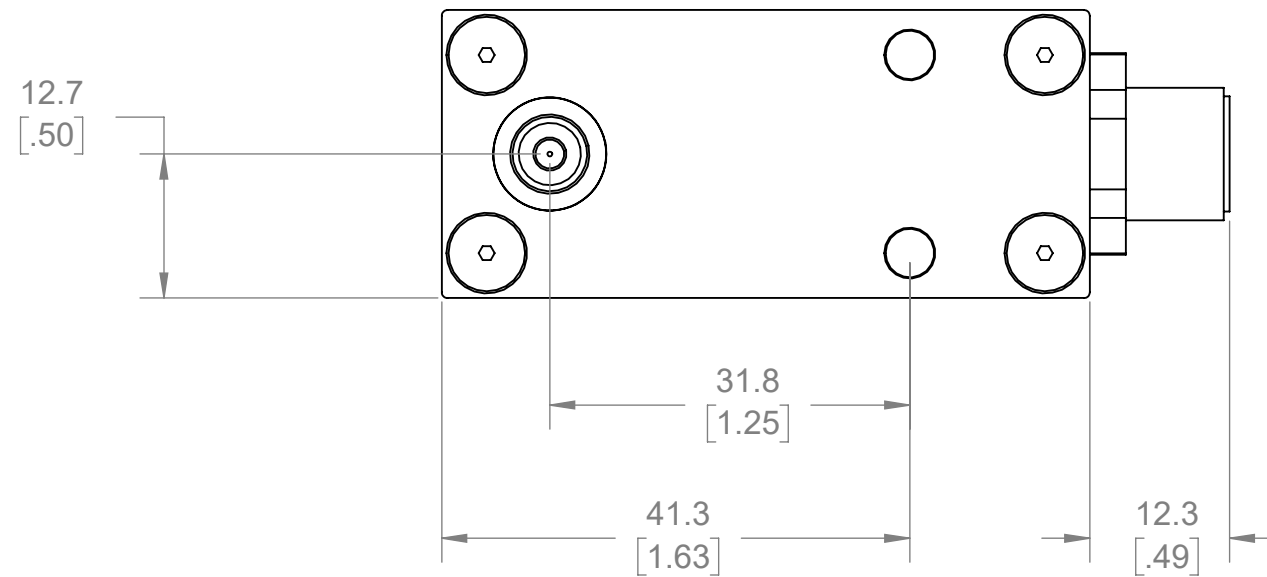
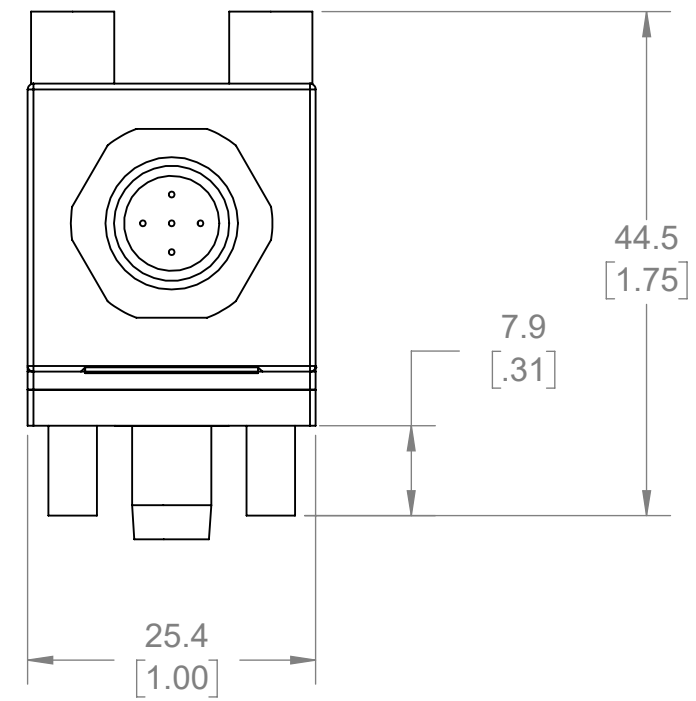
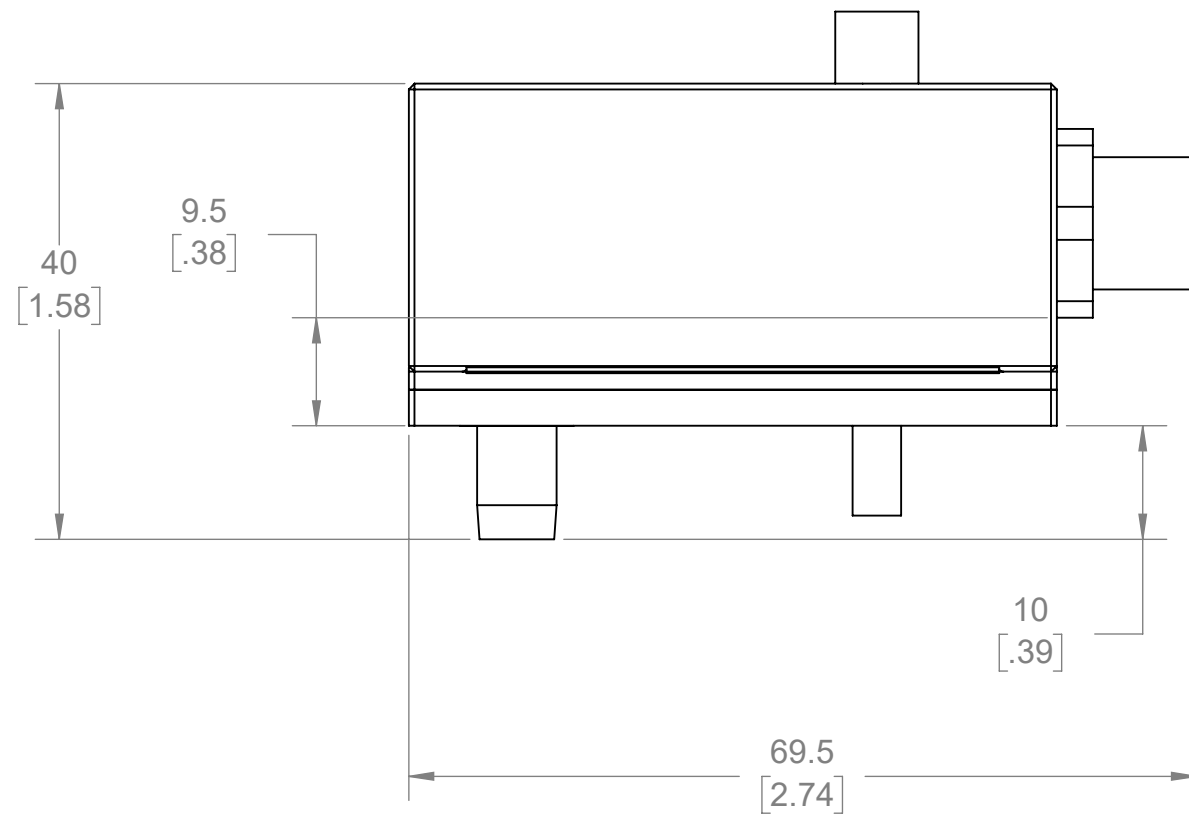


# Drawing Title: LP/LX1-M Installation

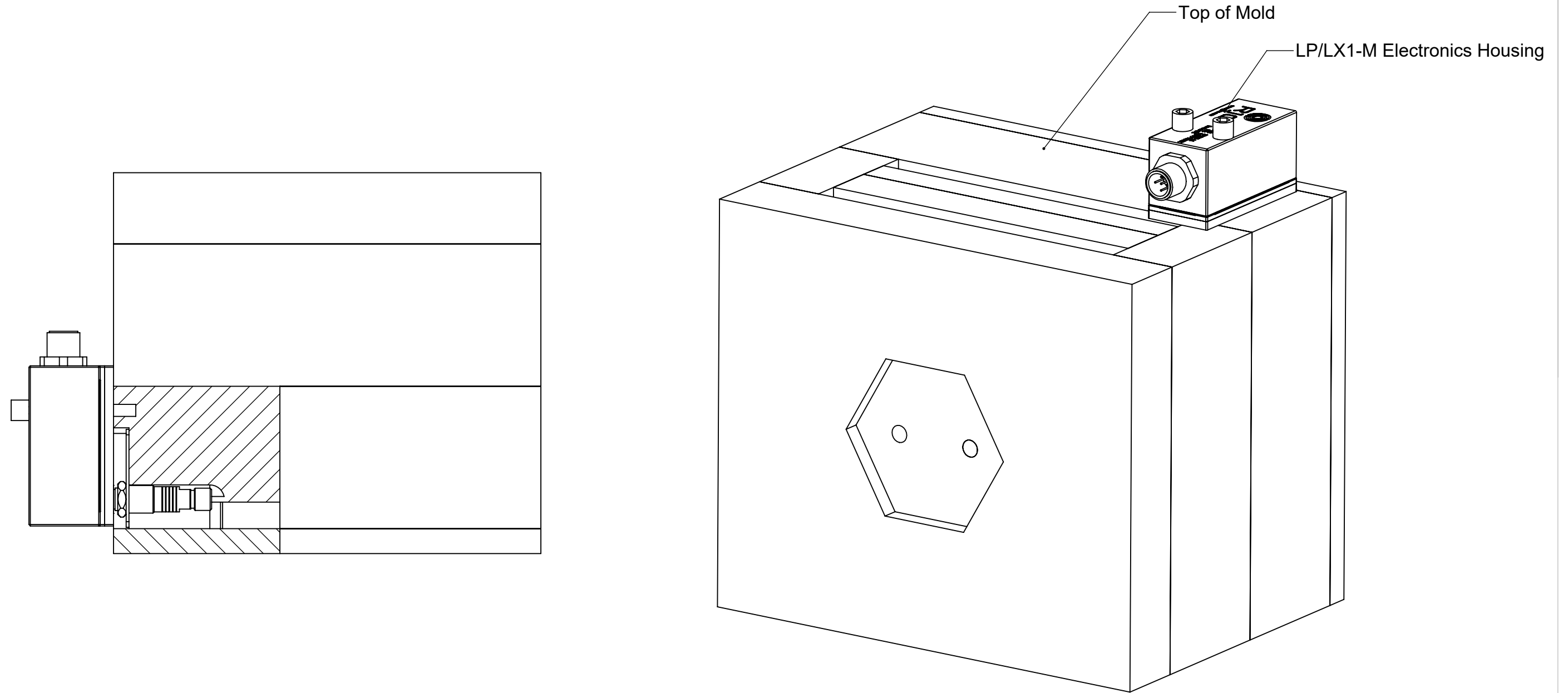


**NOTES:**

1. CLAMP PLATE APPLICATIONS REQUIRE GUIDED EJECTION
2. EJECTOR AND TRANSFER PIN CONCENTRICITY MUST BE WITHIN 0.030" [0.76] OR 10% OF EJECTOR PIN DIA, WHICHEVER IS SMALLER.
3. ENCLOSED EJECTOR BOX SUGGESTED.
4. DO NOT SCALE PRINT
5. BREAK ALL SHARP EDGES, 0.005 [0.03] R MAX
6. DIMENSIONS IN INCHES [MM], UNLESS NOTED
7. TOLERANCES UNLESS SPECIFIED:  
 XXX = ±0.003 [0.08]  
 XX = ±0.01 [0.3]  
 ANGLES = ±3° 30°

 <p>311 Park Street, Traverso City, NJ 08906 201-264-2111   www.rjg.com</p>	Description: LP/LX1-M Installation
	Drawn: K.J.Brettschneider
	Design:
	Check: M.Groleau
Date: 04.04.2023	

# Drawing Title: LP/LX1-M Installation



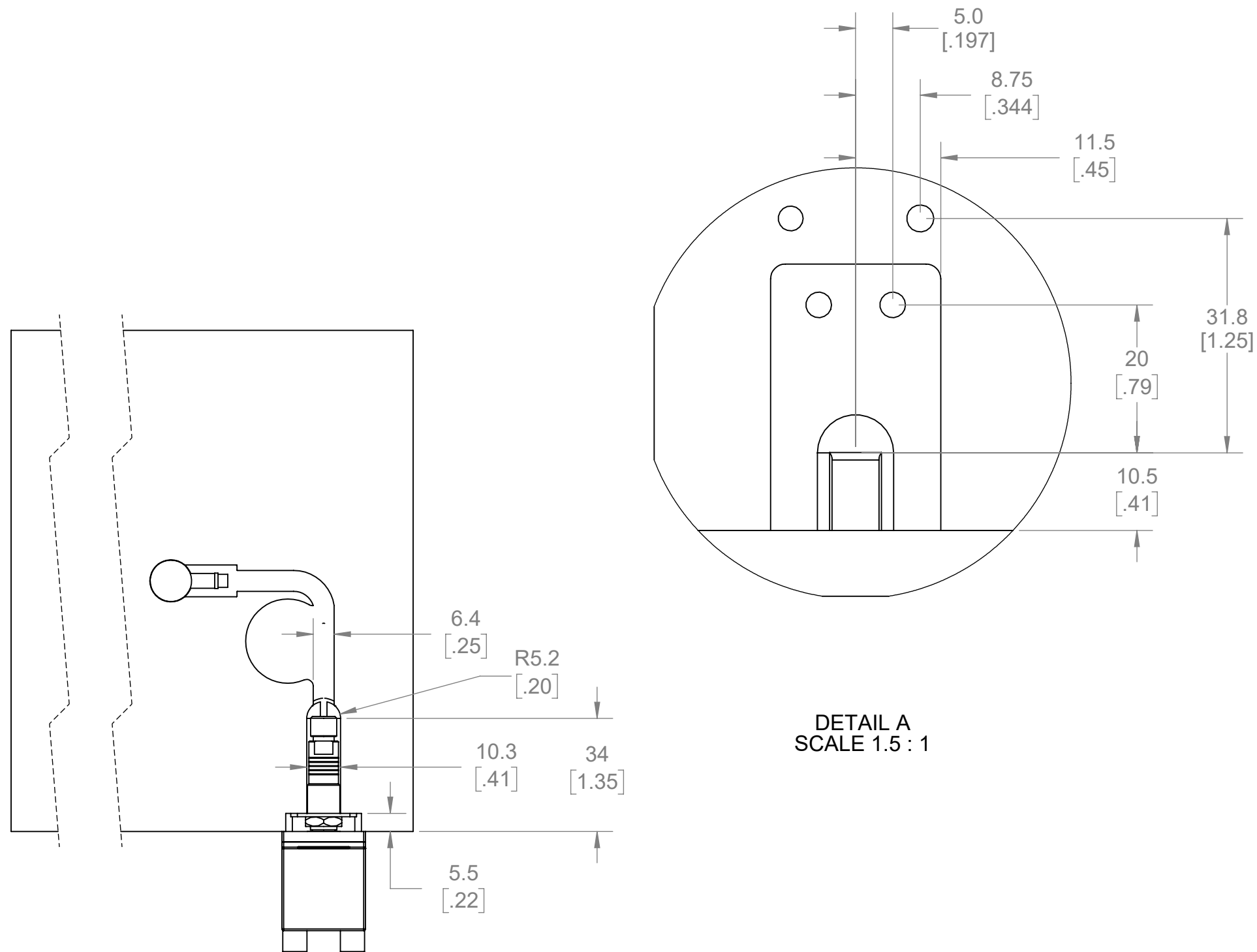
## NOTES:

1. CLAMP PLATE APPLICATIONS REQUIRE GUIDED EJECTION
2. EJECTOR AND TRANSFER PIN CONCENTRICITY MUST BE WITHIN 0.030" [0.76] OR 10% OF EJECTOR PIN DIA, WHICHEVER IS SMALLER.
3. ENCLOSED EJECTOR BOX SUGGESTED.
4. DO NOT SCALE PRINT
5. BREAK ALL SHARP EDGES, 0.005 [0.03] R MAX
6. DIMENSIONS IN INCHES [MM], UNLESS NOTED
7. TOLERANCES UNLESS SPECIFIED:  
XXX =  $\pm 0.003$  [0.08]  
XX =  $\pm 0.01$  [0.3]  
ANGLES =  $\pm 3^\circ 30'$

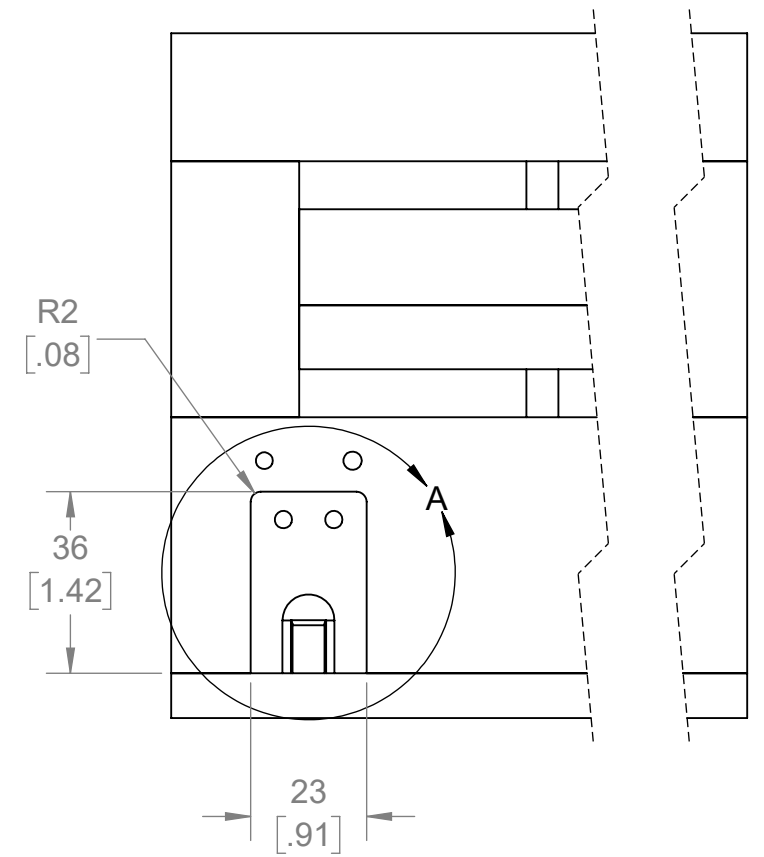


Description: LP/LX1-M  
Installation  
Drawn: K.J.Brettschneider  
Design:  
Check: M.Groleau  
Date: 04.04.2023

# Drawing Title: LP/LX1-M Installation




DETAIL A  
SCALE 1.5 : 1



NOTES:

1. CLAMP PLATE APPLICATIONS REQUIRE GUIDED EJECTION
2. EJECTOR AND TRANSFER PIN CONCENTRICITY MUST BE WITHIN 0.030" [0.76] OR 10% OF EJECTOR PIN DIA, WHICHEVER IS SMALLER.
3. ENCLOSED EJECTOR BOX SUGGESTED.
4. DO NOT SCALE PRINT
5. BREAK ALL SHARP EDGES, 0.005 [0.03] R MAX
6. DIMENSIONS IN INCHES [MM], UNLESS NOTED
7. TOLERANCES UNLESS SPECIFIED:  
 XXX =  $\pm 0.003$  [0.08]  
 XX =  $\pm 0.01$  [0.3]  
 ANGLES =  $\pm 3^\circ$  30°

 <p>311 Park Street, Traverso City, NJ 08066 201-264-2111   www.rjg.com</p>	Description: LP/LX1-M Installation
	Drawn: K.J.Brettschneider
	Design:
	Check: M.Groleau
Date: 04.04.2023	